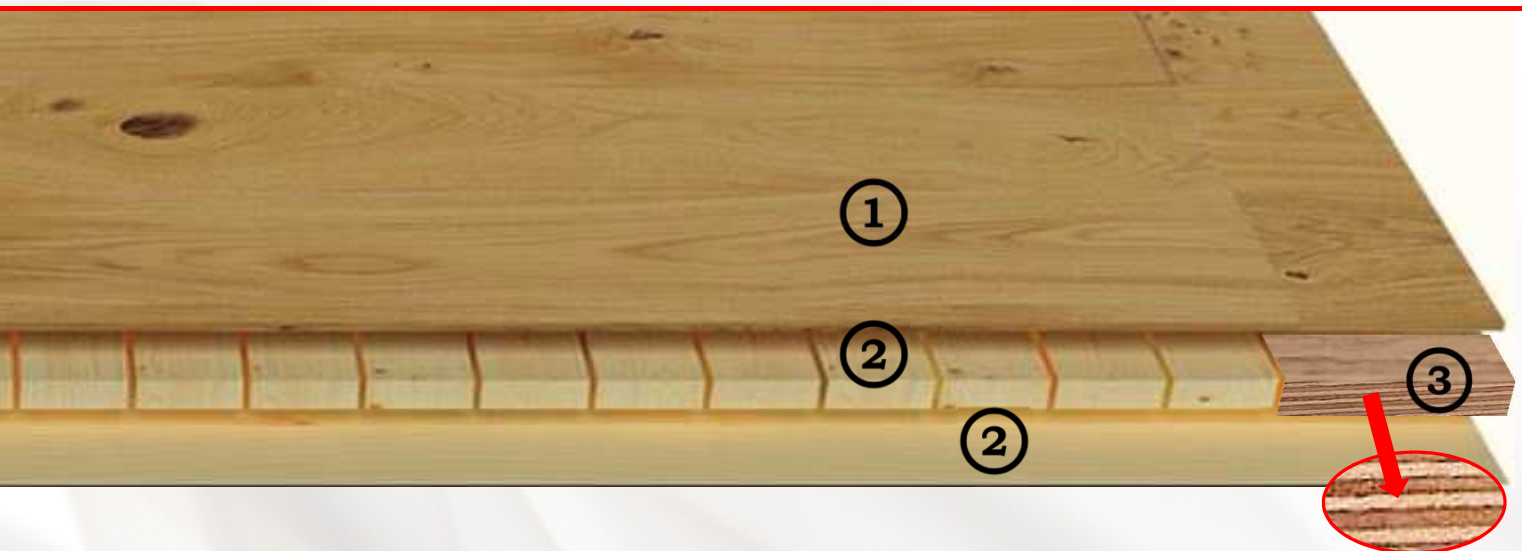


Parquet Floors



Gluing systems



- ① **Top level/deck**
ProFect® 2702 + hardener ProFect® 9710
- ② **Lamination:**
ProFect® 2702 + hardener ProFect® 9708
Pressing time in relation to lamination:
Down to 90 sec, depending on glueline temperature
- ③ **Production of plywood:**
ProFect® 2702 + hardener ProFect® 9537 and
filler ProFect® 6803

Parquet Floors



Formaldehyde emission tests

Emission classes

Class	EN 717-2 Emmision (mg/m ² ·h)	EN 717-1 Emmision (PPM)
E1	≤ 3,5	≤ 0,1
E0		≤ 0,07
CARB2		≤ 0,050

Test results

EN 717-2 Emmision (mg/m ² ·h)	EN 717-1 Estimated Emission (PPM)
1,1	0,031
0,7	0,020



ANSI Water resistance test performed and passable